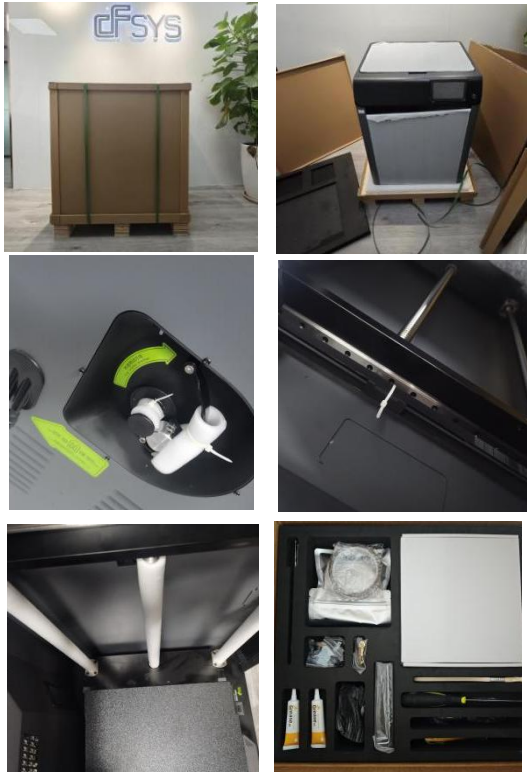


# A450 Quick Start Guide

## [Quick Unboxing Guide]

**Safety Notice:** The printer is heavy and requires at least two people for moving.



Steps are as follows.

1. Remove all external packaging.
2. Open the chamber door and carefully remove all internal foam and cable ties.
3. Take the accessory kit out and check its contents against the appendix list ( Last page).

**Notice**

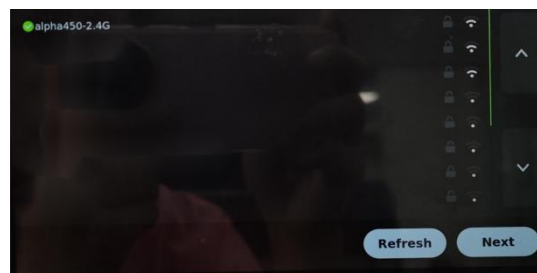
1. Please check if any damage from shipment.
2. Carefully check each parts,avoid the operational failure.

**[Power On]** Connect the power cable first, then press the power button.

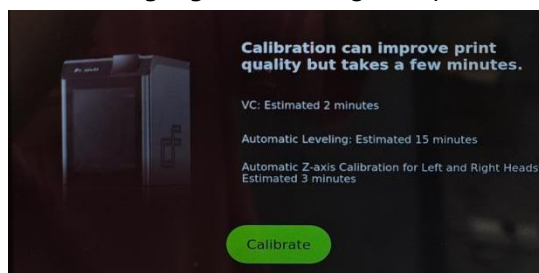
**[Initial Startup Setup]** Wait for the screen to load (approximately 30 seconds), follow the steps as below.



**1.Select Language** Chinese,English,Japanese

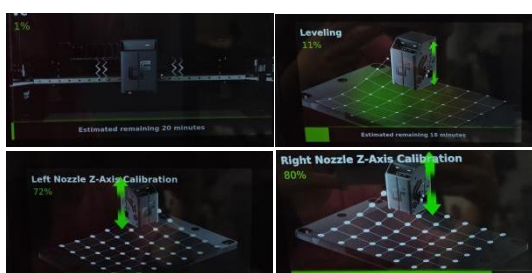


**2.WLAN Connection**



**3.One-click Calibration (20 min)**

Auto leveling, VC(Vibration Compensation)  
Left/right head Z-axis auto calibration(Full Bed)



**Notice**

1. Sometimes loud noise during VC is normal.
2. Please remain nearby for quick error reporting.

## [Pre-Print Preparation: Loading Filament]



### Filament (Accessory kit)

- Composite filament PET-CF\_175\_1kg\_Black\*1spool
- Continuous fiber CIRON®\*CCF-PA \*1spool

Ensure to storage composite filaments in a dry box if without N120.

### Feeding Composite Filaments

1. Gently and evenly push the filament upward through the feed port until about 8 cm emerges from the Teflon tube on the other end.

2. Operation via UI Screen:

**Step1. [Control]** → **[Reset]** to initiate the three-axis reset process.

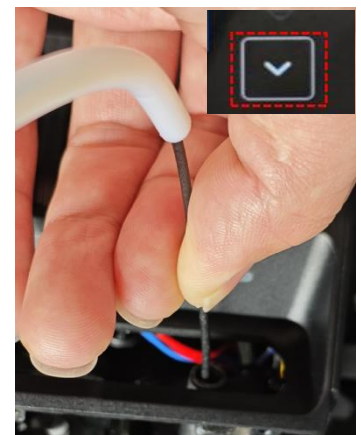
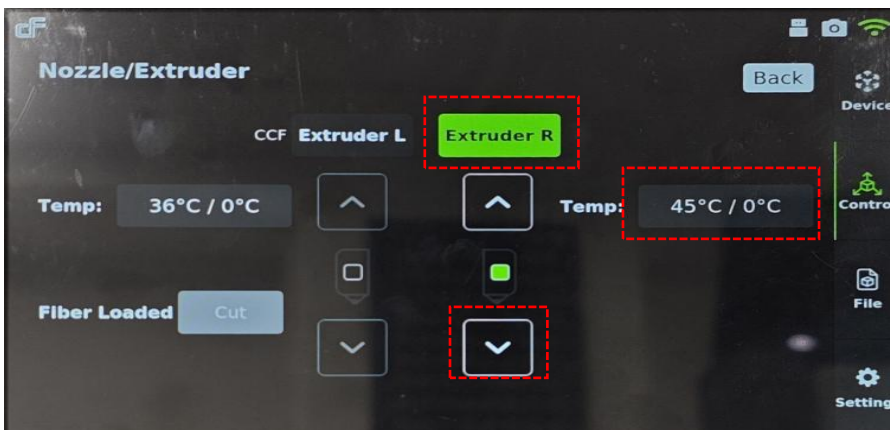
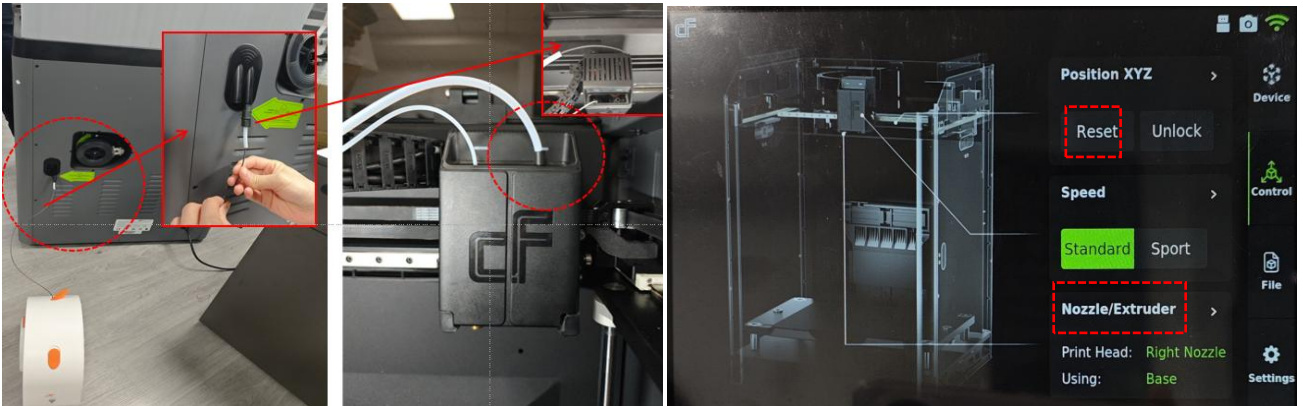
**Step2. [Nozzle/Extruder]** → **[Extruder R]** → **Temp number**. Set it to **300°C** and wait for it to heat up.

**Step3. [V]** Press **1-2** times, then pinch the filament and insert it into the feed inlet.

Release when you feel the filament being pulled in. (If not pulled in, repeat this step.)

**Step4. [V]** Press **2-3** times and wait for the filament extruding.

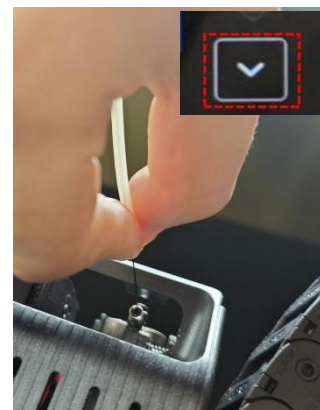
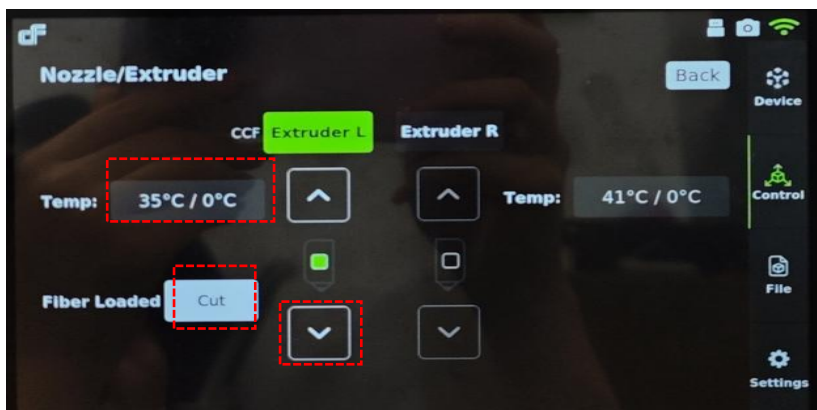
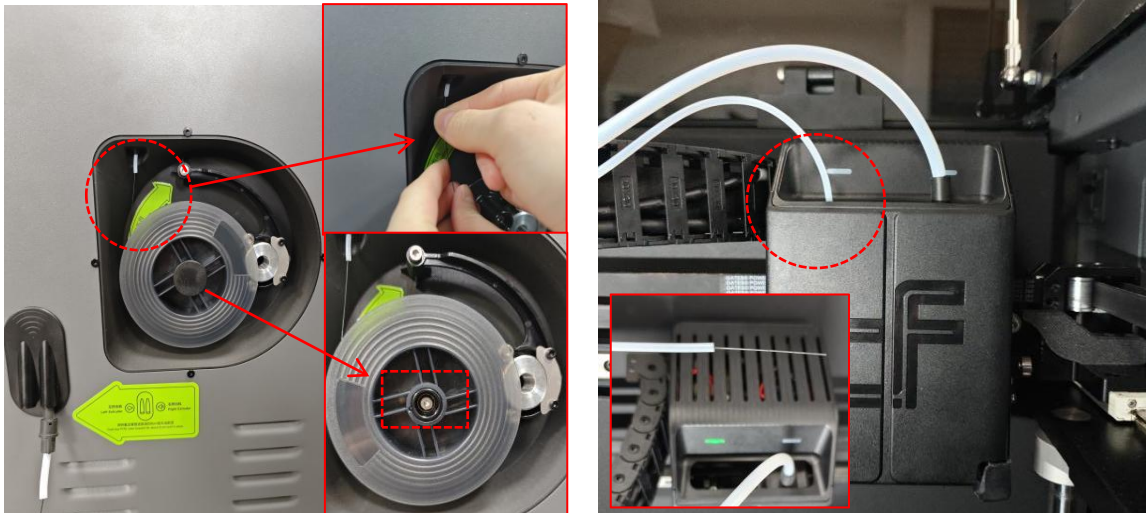
3. Set the right nozzle temp to **0°C**. Remove the filament from the right nozzle.



## Feeding Continuous Fiber

**Note: The diameter of the continuous fibers is only 0.35mm. Please follow these steps carefully.**

1. Remove the magnetic snap, place the spool on its material holder, then reposit the magnetic snap.  
P.S.: Please pay attention to the direction and the grooves on the spool.
2. Remove the tape, slowly feed the fiber into the feed port until about 10 cm emerges from the Teflon tube on the other end.
3. Operation via UI Screen:
  - Step1. [Extruder R]** Switch the head → **Temp number**. Set it to **160°C** and wait for it to heat up.
  - Step2. [V]** Press 1-2 times, then pinch the fiber and insert it into the feed inlet. Release when you feel the fiber being pulled in. (If not pulled in, repeat this step.)
  - Step3. [V]** Press 2-3 times and wait for the fiber to extrude.
  - Step4. [Cut]** Cut the fiber.
4. Set the right nozzle temp to 0°C. Remove the fiber from the left nozzle.



### [Start Printing]

Click [File] → [Local] Select the models to print.

There are four models responding to composite filament printing and continuous fiber printing.

### [Accessory Kit List]

Type	Content
Print head	Continuous fiber_Copper alloy nozzle *3
	Teflon tube_2mm *20
	Nozzle Cleaner_1.8mm *1
	Nozzle Cleaner_0.5mm (For continuous fiber) *1
	Grease_10g *2
	Slicer *2
	Hex wrench *4
	Nozzle cleaning silicone brush *3 pair
Tool	Diagonal pliers *1+Nozzle pliers *1+ Scraper *1+ Brush *1
	Gloves *1 pair+ Teflon high-temp Tape *1
Plate	Flexible print plate_PEI plate *1
Material	Composite Filament PET-CF_175_1kg_Black *1 spool
	Continuous fiber CIRON®*CCF-PA *1 spool

[Technical Supports] Email: [support@cfsys.com](mailto:support@cfsys.com)

CFSYS

Wish you a pleasant printing experience!

[www.cfsys.com](http://www.cfsys.com)